

# Single Storey Modern Office - For Sale



**Unit 230, Avenue West, Skyline 120, Great Notley, Braintree, Essex CM77 7AA**

## Location

Braintree is a growing market town with a population of around 45,000. The town enjoys excellent transport links via the busy A120 some 15 miles west of Colchester, 15 miles east of Stansted Airport/M11 and north of Chelmsford via the A131. The town has direct rail links into London Liverpool Street with a journey time of around 1 hour.

The property is situated within an established office complex offering immediate access to the A120 and A130 trunk roads

## Description

Comprising an attractive, open plan office building, the accommodation is carpeted throughout benefitting from suspended ceilings, raised floors, recessed covered strip lighting, air-conditioning, comfort cooling and heating three phase electricity, an alarm system and aluminium cased double glazed windows.

The unit which benefits from good natural light is fully DDA compliant and has three WCs, one of which is disabled and with a shower and an open kitchen area.

Externally the business park is landscaped with grassed areas to the front and back. Outside the unit there are six allocated car parking spaces.

## Accommodation

According to our calculations, the unit has the following Nett Internal Areas:

Ground Floor	1,820 sq. ft
Mezzanine Store	258 sq. ft
<b>Total</b>	<b>2,078 sq. ft (193.98 sq. m)</b>





## **Town Planning**

The property is situated in an established employment area and is understood to benefit from Office use. Interested parties are advised to contact Braintree Council on 01376 552525.

## **Asking Terms**

Freehold – £400,000

## **Rateable Value**

The building appears in the Valuation List with a Rateable Value of £31,000.

## **VAT**

The property is elected for VAT.

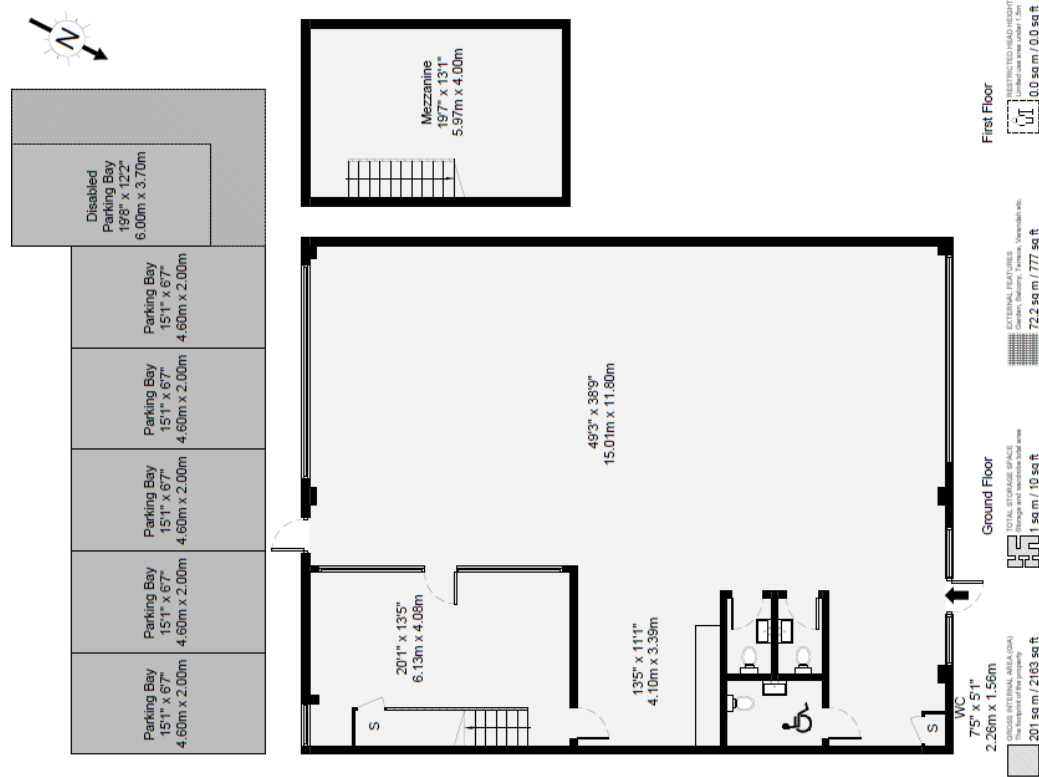
## **Legal Fees**

Each party is to bear their own legal costs throughout the course of any transaction.

## **EPC**

The property has an EPC Rating of: C69





**Tony Lockwood**  
t.lockwood@whybrow.net  
01206 577667



**Charntelle Goodyear**  
Charntelle.goodyear@whybrow.net  
01206 577667



**Jacob Clarke**  
j.clarke@whybrow.net  
01206 577667

Misrepresentations Act 1967

**01206 577677 | [info@whybrow.net](mailto:info@whybrow.net) | [whybrow.net](http://whybrow.net)**

Whybrow Commercial Ltd. for themselves and for the vendors or lessors of this property whose agents they are give notice that (i) the particulars are set out as a general outline only for the guidance of intending purchasers or lessors and do not constitute part of an offer or contract, (ii) all descriptions, dimensions, references to condition and necessary permissions for use and occupation and other details are given in good faith and are believed to be correct, but their accuracy is not guaranteed and any intending purchaser or tenant should not rely on them as statements or representations of fact but must satisfy themselves by inspection or otherwise as to the correctness of each of them, (iii) no person in the employment of Whybrow Commercial Ltd. Has any authority to make or give any representation or warranty in relation to this property. Whybrow Commercial Ltd, 2 De Grey Square, De Grey Road, Colchester, Essex, CO4 5YQ. Registered in England No 2155295